

# Devon Wildlife Trust's

## *Guide to common seaweeds*



**Devon**



**Gutweed**  
*Ulva intestinalis*



**Sea lettuce**  
*Ulva lactuca*



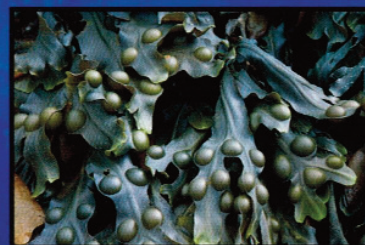
**Cladophora**  
*rupestris*



**Channelled wrack**  
*Pelvetia canaliculata*



**Spiral wrack**  
*Fucus spiralis*



**Bladder wrack**  
*Fucus vesiculosus*



**Egg wrack**  
*Ascophyllum nodosum*



**Serrated wrack**  
*Fucus serratus*

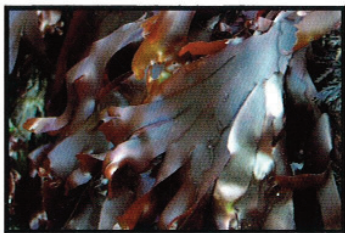


**Pepper dulse**  
*Osmundea pinnatifida*



**Irish moss**  
*Chondrus crispus*; centre and  
**Coral weed**  
*Corallina officinalis*; pink seaweed around edges





**Dulse**  
*Palmaria palmata*



**Laver**  
*Porphyra umbilicalis*



*Polysiphonia lanosa*  
(found on Egg wrack)



**Sugar kelp**  
*Laminaria saccharina*



**Oarweed**  
*Laminaria digitata*



**Wireweed**  
*Sargassum muticum*; a non-native species

## The Seashore Code

Help protect north Devon's special coastline by following the Seashore Code every time you go rockpooling.



### Handle me with care

Poking or squeezing soft-bodied animals like sea anemones can harm them.



### Don't make me homeless

Make sure a shell is empty if taking it home.



### I don't like litter

Take your rubbish home - litter is a killer for wildlife.



### Put me back

Always replace animals, rocks and seaweed where you found them. Don't leave animals in buckets.



### Watch where you walk

Be careful not to dislodge or crush small sea creatures. Don't force animals like limpets off the rocks.



### Look after yourself

Check the tide and keep away from the cliffs.

Devon Wildlife Trust runs marine activities around the county. For more information visit [www.devonwildlifetrust.org](http://www.devonwildlifetrust.org) or call 01392 279244.

In south Devon, Wembury Marine Centre organises guided tours of the rocky shore at Wembury beach between April and September.

For more information contact the Centre on 01752 862538 or email [info@wemburymarinecentre.org](mailto:info@wemburymarinecentre.org)

Visit the website:  
[www.wemburymarinecentre.org](http://www.wemburymarinecentre.org)

Devon Wildlife Trust  
Cricklepit Mill  
Commercial Road  
Exeter  
EX2 4AB