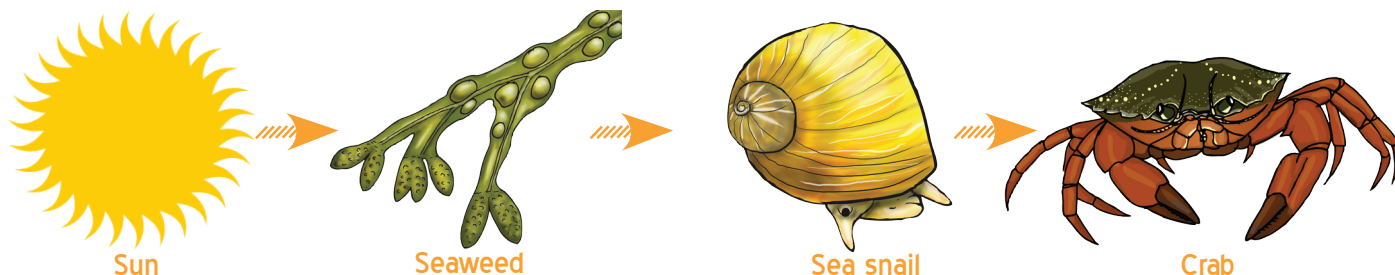


MARINE FOOD CHAINS

All life in the sea and on the shore depend on something in order to survive. Most often it is one another! Food chains in the sea differ to ones on land, but nearly all food chains on earth start off with the same thing... the SUN!

The sun gives light energy to producers such as plants, who use this energy along with water and carbon dioxide, to grow. This process is called photosynthesis. Seaweeds are an example of a producer. Primary consumers are animals like

sea snails. These are also called herbivores, who eat the producers to get their energy. Secondary consumers, called Predators eat primary consumers, who then become Prey!



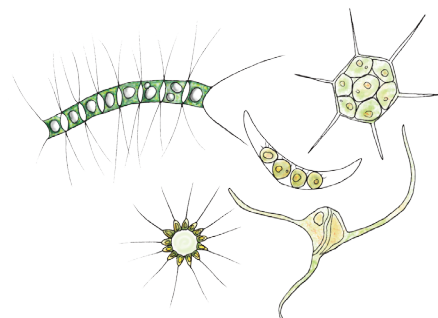
1. Use the examples above to Fill in these boxes

Producer

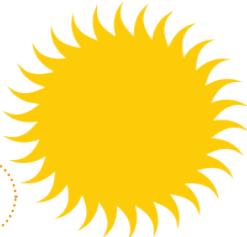
Primary Consumer

Secondary Consumer

In the sea, it is not only seaweeds that photosynthesise. Tiny microscopic algae floating on the surface, called Phytoplankton also do! This makes them producers too. They are filtered from the water and eaten by a number of larger animals, including mussels and barnacles.



Write a number next to each of the pictures below and use arrows to show their order in the food chain, then label them as 'producer', 'primary consumer' or 'secondary consumer'.



1
Sun

