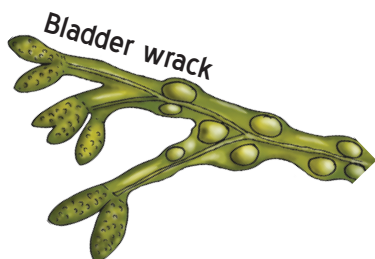


# CLASSIFICATION GAME

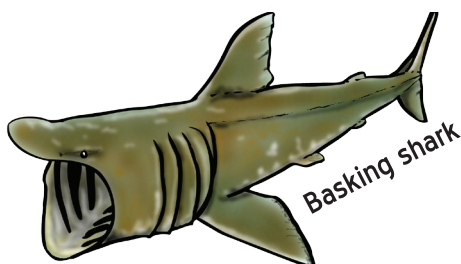
There are many different types of seaweeds and animals that live in the sea. One way of identifying living things is to separate them into groups. This is known as classification. Most plants that live in the sea are called **seaweed** or

**algae**. **Mammals** are animals who, like us, are warm blooded and breathe air with lungs. **Fish** however, are cold blooded and have gills so that they don't need to come out of the water to breathe. The majority of animals in the sea are

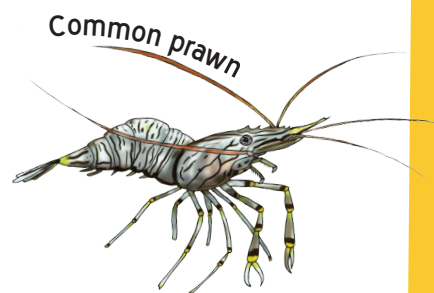
**Invertebrates**. They don't have a skeleton or bones like us, but often have a shell or are slimy! Have a look at the examples below and see if you can put the plants and animals in their correct group



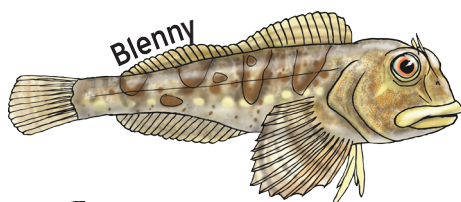
Bladder wrack



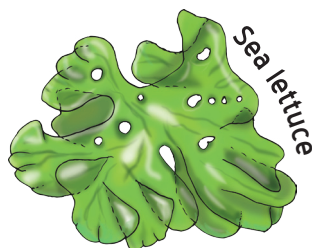
Basking shark



Common prawn



Blenny



Sea lettuce



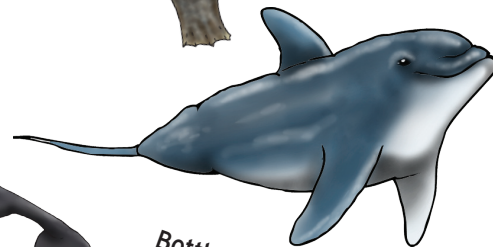
Grey seal



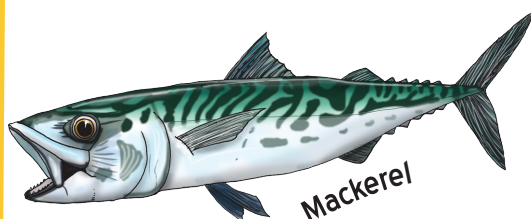
Velvet swimming crab



Harbour porpoise



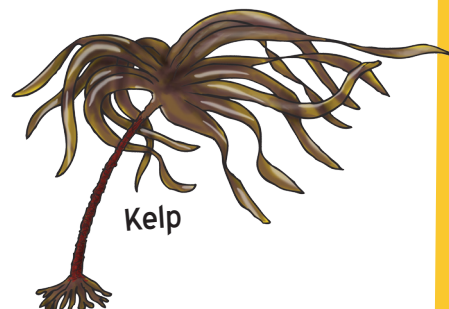
Bottle-nosed dolphin



Mackerel



Flat periwinkle



Kelp

## Seaweed

1.	
2.	
3.	

## Fish

1.	
2.	
3.	

## Mammals

1.	
2.	
3.	

## Invertebrates

1.	
2.	
3.	