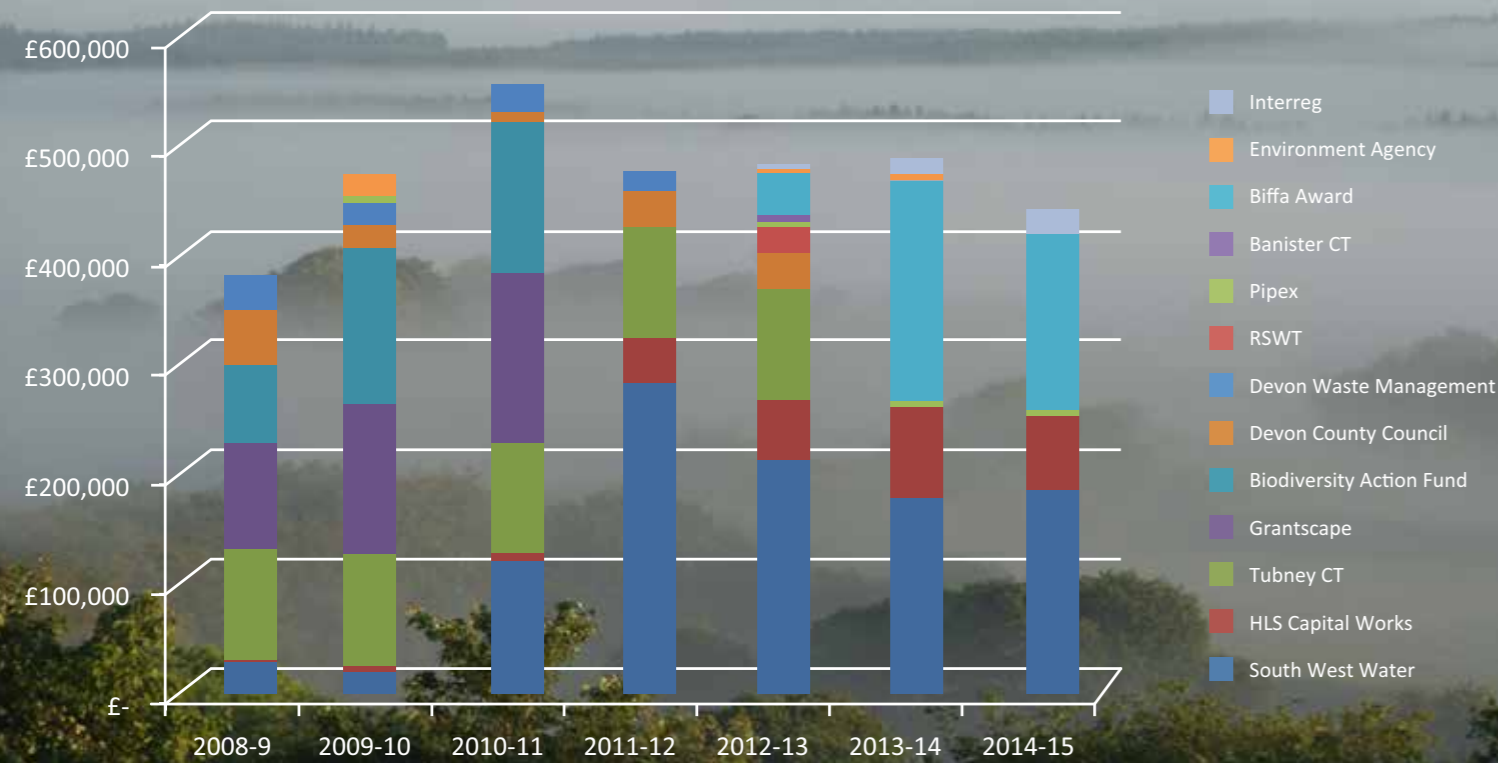


The costs

In total, Working Wetlands has cost around £3m over the past 7 years, all of which has been provided by a complex partnership of organisations. In addition to this, we have had an amazing amount of other support and sponsorship, without which, none of the outcomes achieved would have been possible.



Since 2008 the Working Wetlands team has delivered:



19 Presentations to conferences



19 Farmer workshops



27 Public walks and talks



15 Looking and grazing training days



36 Presentations to partner meetings

332 Media appearances in various forms, including BBC Countryfile, Farming Today, Spotlight, Radio Devon and numerous newspapers, magazines and websites



This summary of our work in the Culm over the last 7 years was published in 2015



1,750 Landowners receive Culm Connections, now in its 21st year.



10 Detailed advice notes are available in a Practical Advice Pack



11 Case Studies were published in 2015

All of these documents and more are available on the new Living Landscape Resources page on the DWT website <http://www.devonwildlifetrust.org/living-landscape-resources>

From April 2015 Working Wetlands will be entertaining a new phase as part of the South West Water Upstream Thinking Programme. As well as continuing our work in the Tamar and Exe headwaters, we will be turning our attentions to the rivers Dart, Otter and Barnstaple Yeo where SWW have water abstraction points they are keen to safeguard from land management practices which affect water quality.

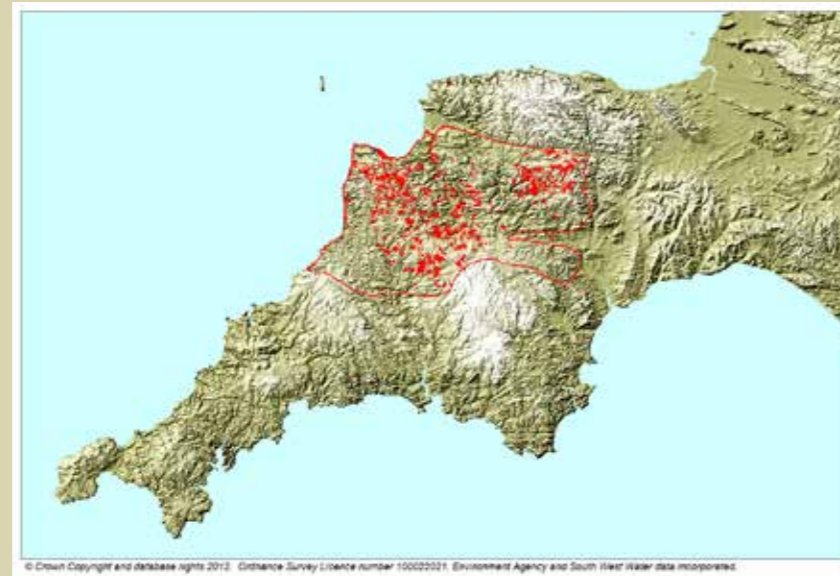


Devon

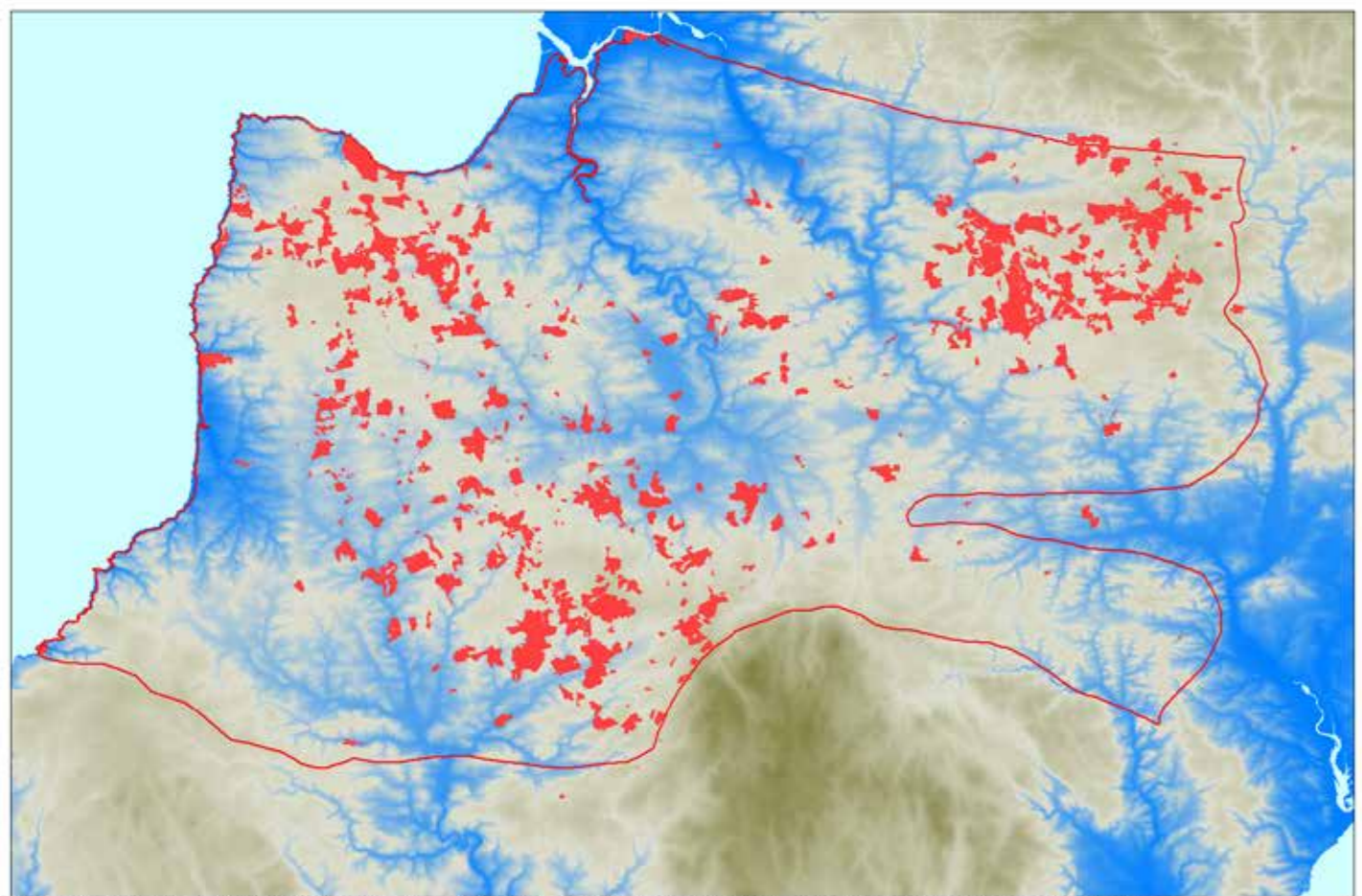
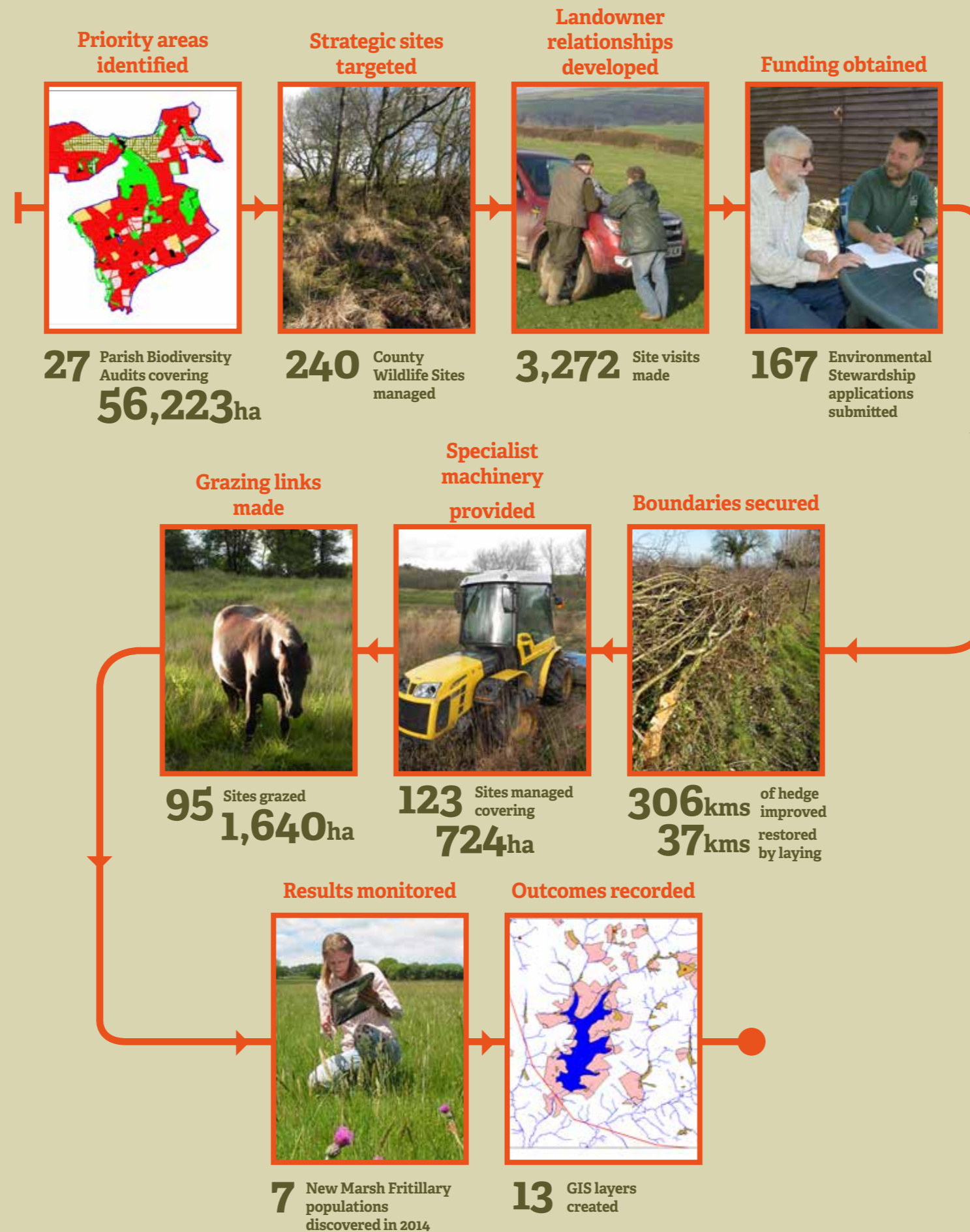
Working Wetlands

The first 7 years...
2008 - 2015

Across the four river catchments that make up the Culm National Character Area (NCA), we are working with 450 landowners, who own 25,209ha of farmland



The steps to grassland restoration



The funding for the farmers came in two main forms:

Capital Projects

£162,600
Spent on **74** capital projects

- Devon Waste Management £80,000 spent on 43 projects.
- South West Water (Upstream Thinking) £15,000 spent on 7 projects.
- Defra via The Wildlife Trusts £16,000 spent on 9 projects.
- Environment Agency Catchment Restoration Fund (TRIP) £30,000 spent on 9 projects.
- BIFFA Flagship Award £21,600 spent on 6 projects.

Agri-Environment Schemes

£7,400,000
In Agri-Environment Schemes drawn down from Natural England into the Culm Farming community since 2008

- 72 HLS** Higher Level Stewardship agreements covering 7,278ha
- 82 ELS** Entry Level Stewardship agreements covering 6,946ha
- 10 OELS** Organic Entry Level Stewardship agreements

Re-creation of species-rich meadows from improved grasslands requires different approaches depending on the existing soil conditions:

